



# LMS Trends

Offering continuous learning and development is key to employee onboarding and retention but also to ensuring the organization's top performance. Since most organizations support many active learners, their LMS solutions must address various needs and challenges.

Gatepoint Research surveyed **100 executives\*** representing diverse industries to determine their priorities for maximizing employee learning, learning metrics needing improvement and the most important capabilities in an LMS.

## Priorities to Maximize Learning for All Users

Enrich the onboarding experience

81%

Fostering a culture of learning

64%

Use data and analytics to improve training program quality continuously

35%

Develop faster accessibility to content

30%

Improve user interface and navigation

28%

Reduce costs of training

21%

Deploy mobile and offline accessibility

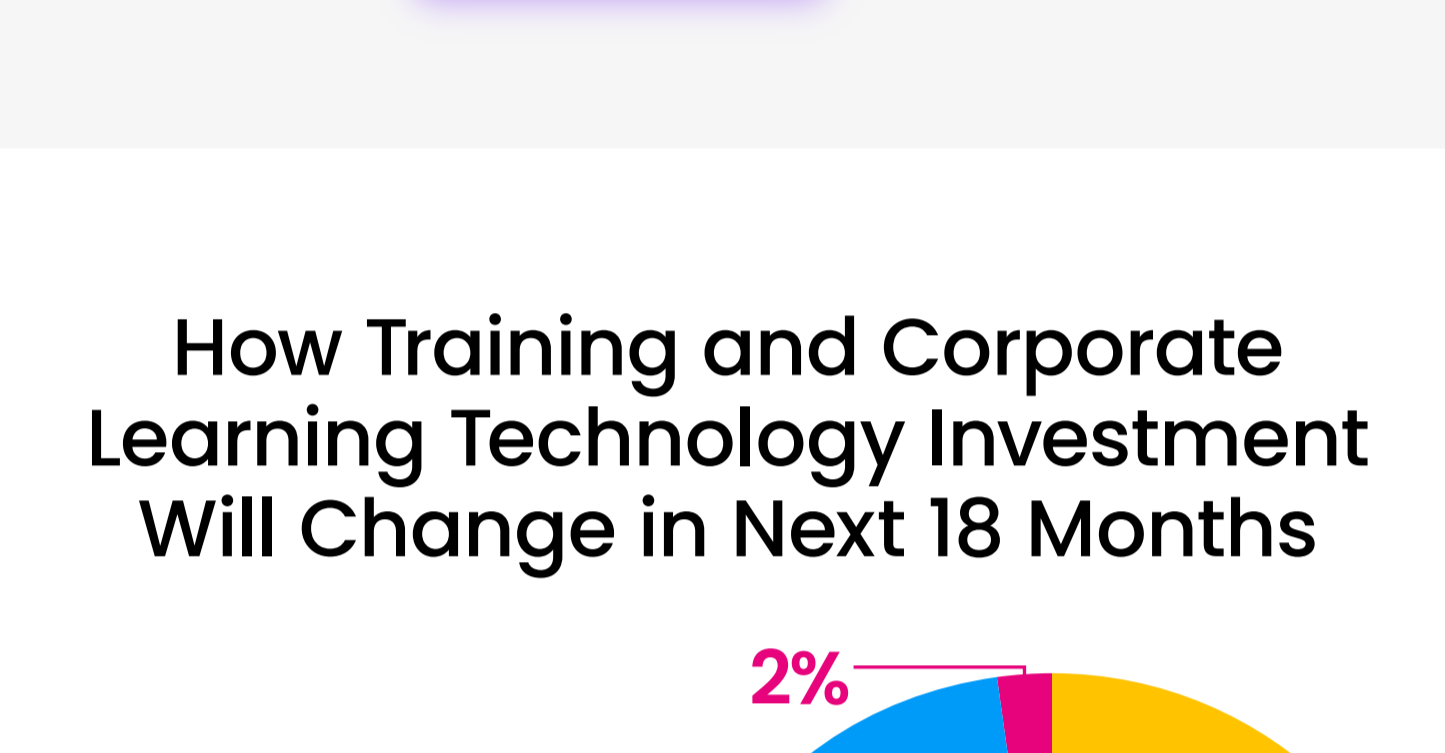
12%

Introduce gamification

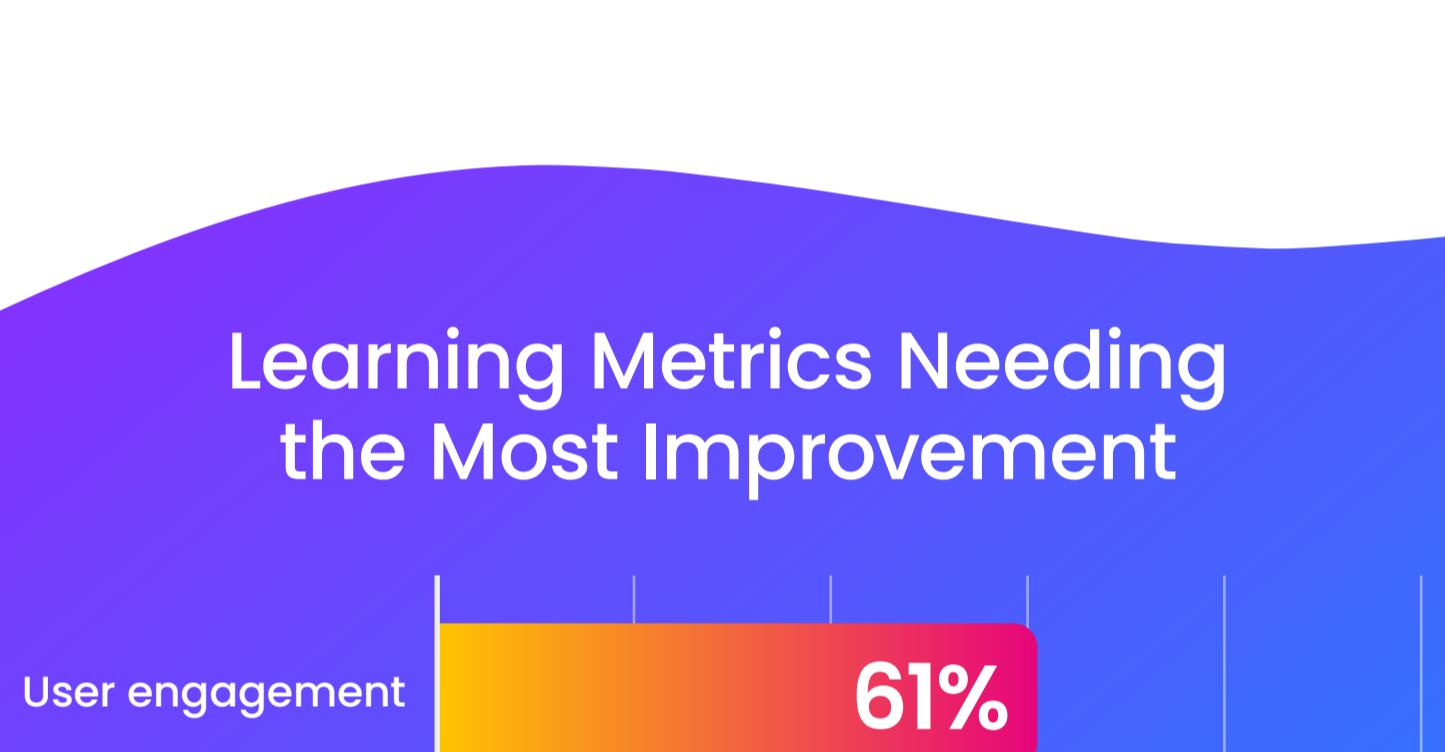
10%

Enriching onboarding and fostering continuous learning are the top priorities.

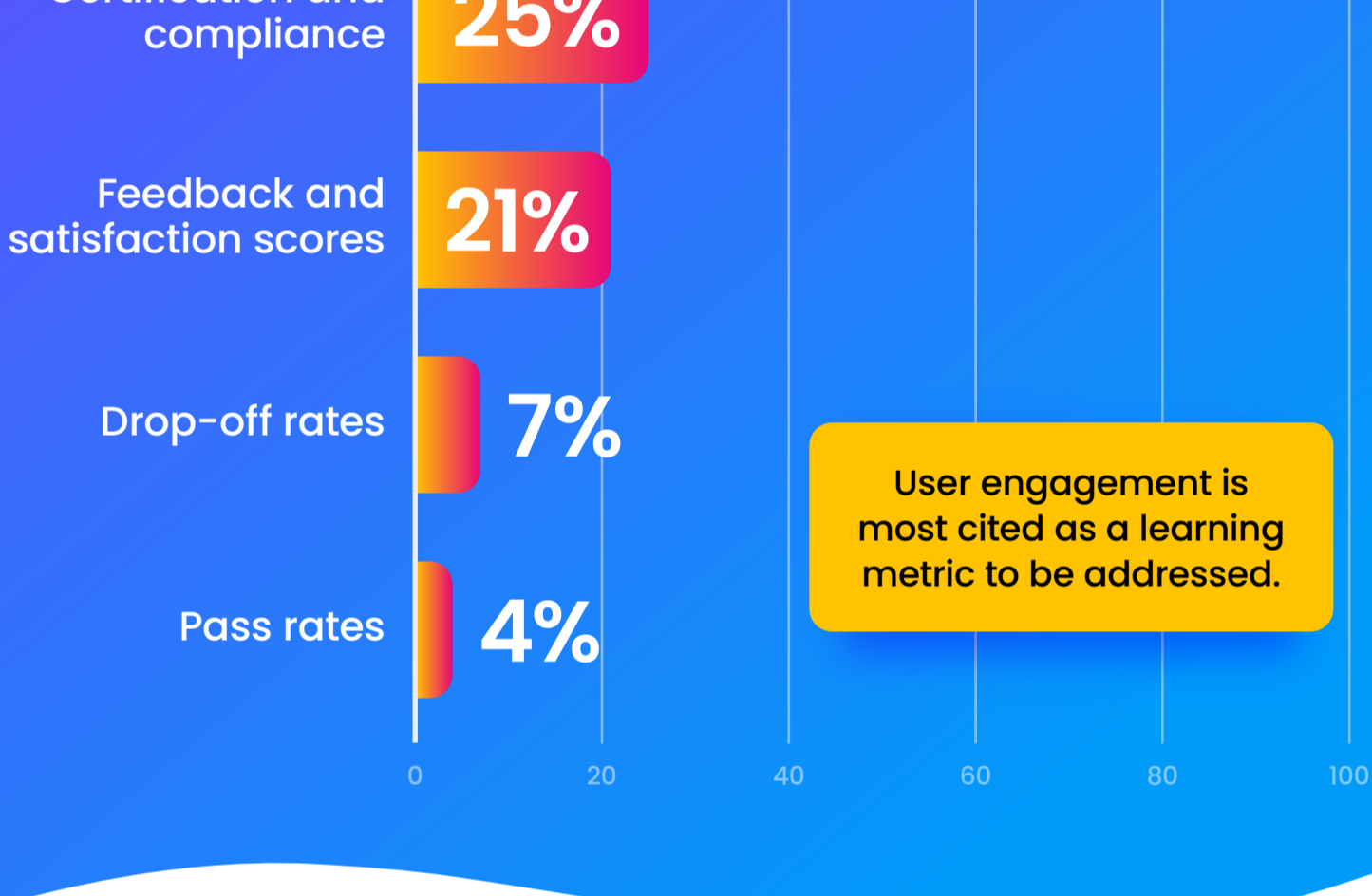
## Number of Active Learners Enrolled in LMS(s)



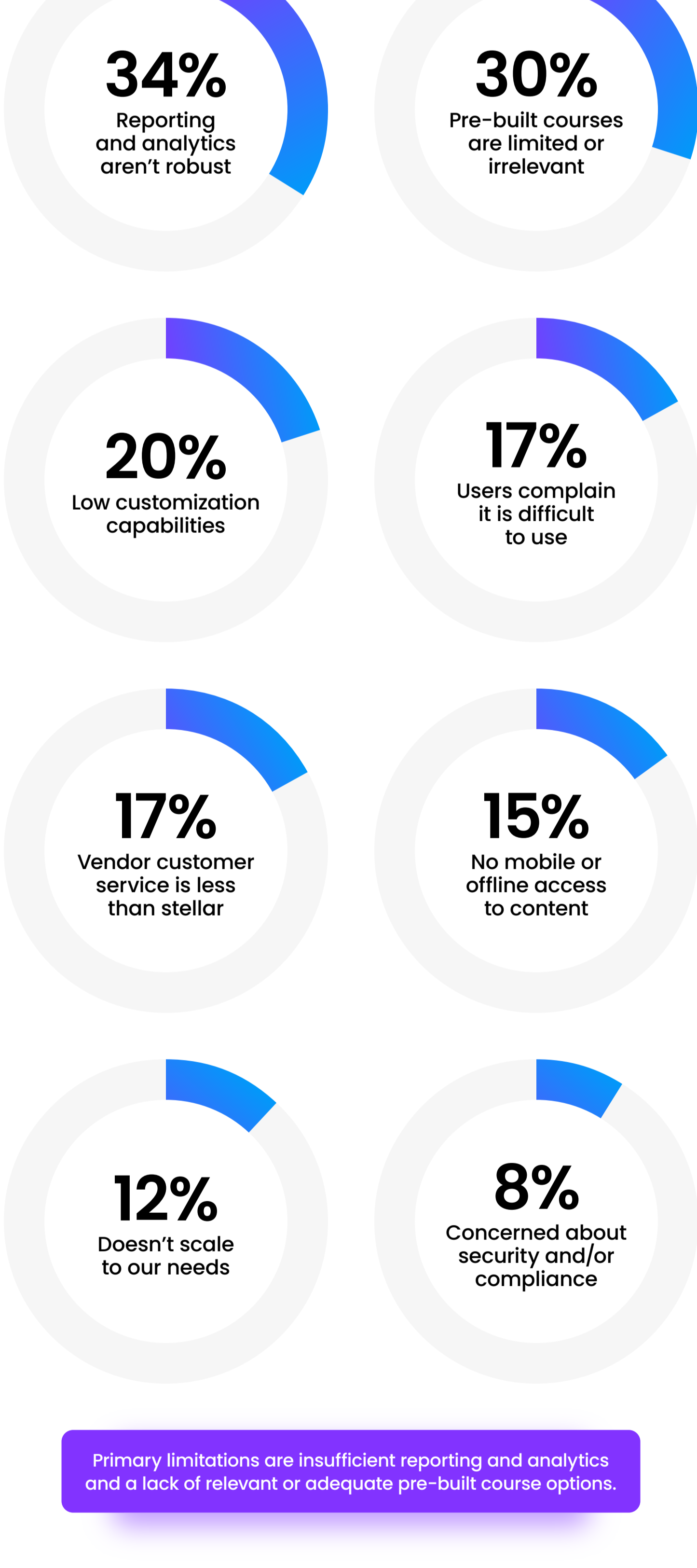
## How Training and Corporate Learning Technology Investment Will Change in Next 18 Months



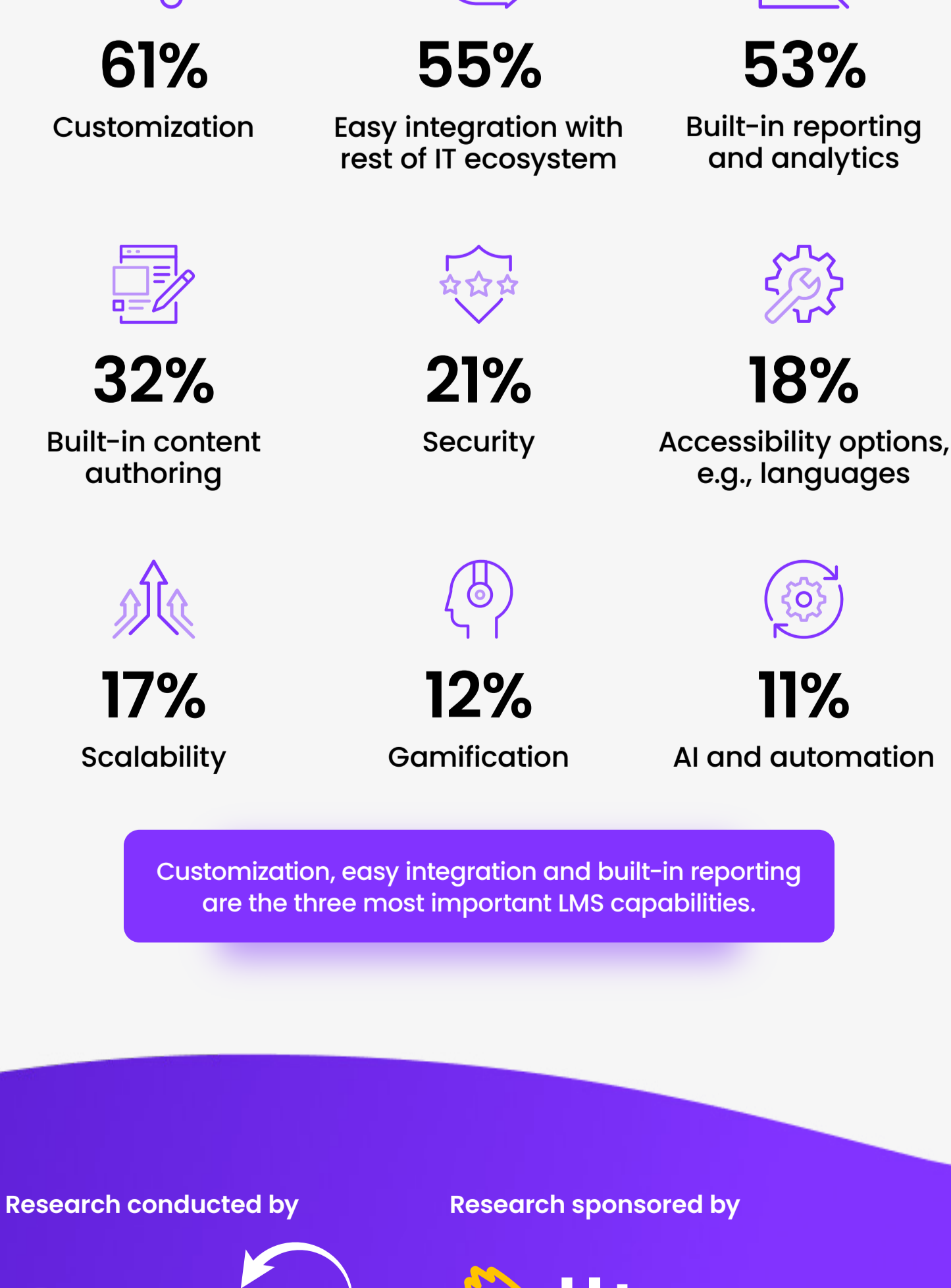
## Learning Metrics Needing the Most Improvement



## How Current LMS Restricts or Inhibits Corporate Training Program(s)

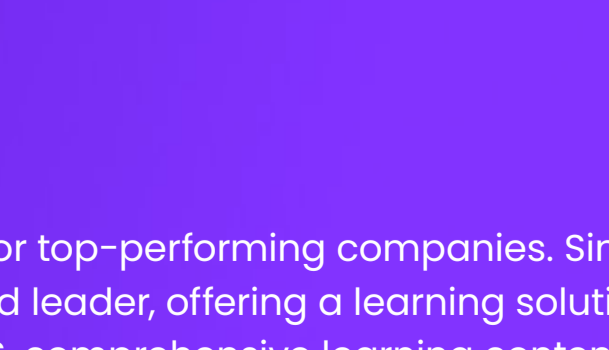
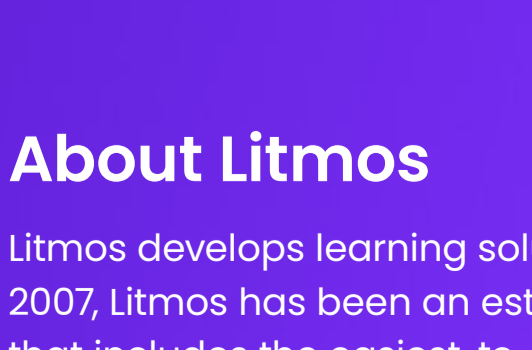


## Most Important Capabilities in an LMS



Research conducted by

Research sponsored by



### About Litmos

Litmos develops learning solutions for top-performing companies. Since 2007, Litmos has been an established leader, offering a learning solution that includes the easiest-to-use LMS, comprehensive learning content collections, integrations with top workflow tools, and services to support success. Thousands of companies trust Litmos learning solutions to deliver instruction and intelligence to employees, customers, and partners. The solutions are used by more than 30 million people in 150 countries across 37 languages. Find more information at [www.litmos.com](http://www.litmos.com).

[Learn More](#)

\* Management levels represented are all senior decision-makers: 30% hold the title CxO or VP, 42% are Directors, 28% are senior or department managers